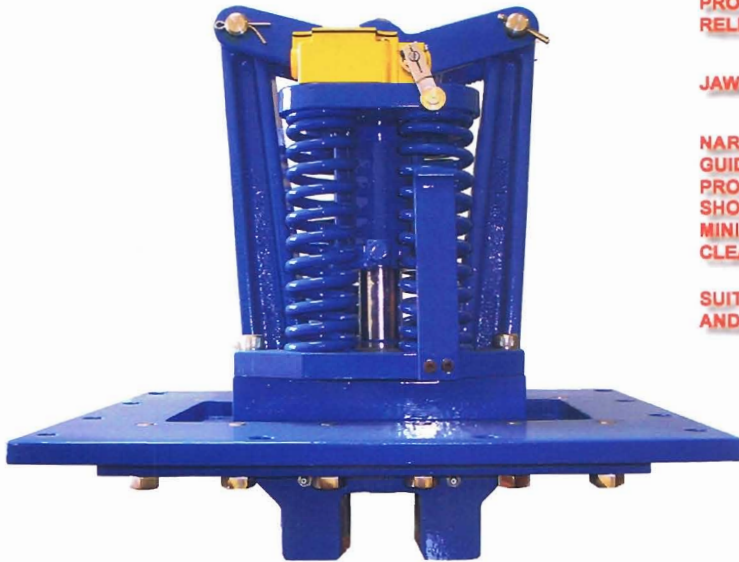


Storm Brakes - Rail Head Clamps

- CRANES
- SHIPLOADERS
- STACKERS
- RECLAIMERS
- TRIPPERS



MANUAL RELEASE AND
SPRING CAGING BOLT

LINKAGE PROPORTIONED
TO COMPENSATE FOR VARYING
SPRING FORCE

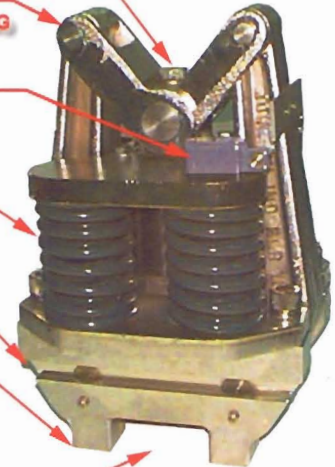
LIMIT SWITCH TO INDICATE
RELEASE AND PROVIDE
DRIVE INTERLOCK

HELICAL COIL SPRINGS
PROVIDE MAXIMUM
RELIABILITY

JAW FLOAT +/- 2" (50mm)

NARROW AND RUGGED
GUIDE YOKE ASSEMBLY
PROTECTS SERRATED
SHOES AND REQUIRES
MINIMUM RAIL HEAD
CLEARANCE

SUITED TO ALL RAILS SIZES
AND ANY CUSTOM RAIL



NEW!

V-Series Design
Featuring Vertical,
Horizontal, &
Rotational
Movement!

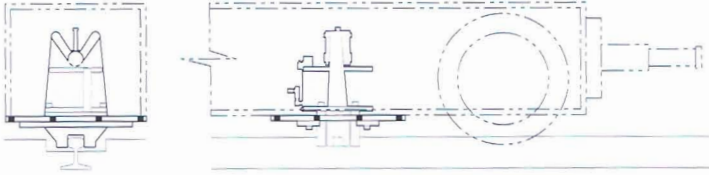


- **MECHANISM** - spring force toggle compensated
- **FLOAT** - standard lateral and combined vertical, lateral, and rotational movement
- **ACTUATION** - automatic spring-set, hydraulic pressure released
- **MOUNTING** - sill beam, truck-end, and flange are standard
- **CONSTRUCTION** - highest quality steels and cast alloys, all pins stainless steel
- **SPRINGS** - helical coil springs for maximum reliability and visual inspection
- **SHOES** - field replaceable, serrated hardened tool steel
- **LUBRICATION** - lube points provided at critical wear areas
- **CONTROLS** - release indicating / interlock limit switch provided
- **HYDRAULICS** - separate or integral power units available
- **OPTIONS** - special alloys, coatings, controls and custom mountings
- **ENGINEERING** - application and selection assistance available

SPECIFICATIONS

STORM BRAKES - RAIL HEAD CLAMPS

Flange Mounted



SFC

Ordering Information:

Model = "Style + Size"

ie.

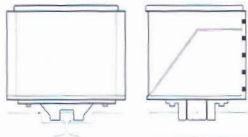
SFC 012

VBC 075

STC 150

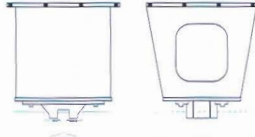
Specify main power and control voltages for integral hydraulic systems

Truck End Mounted



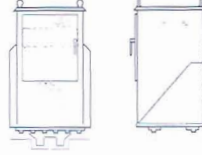
STC

Sill Beam Mounted



SBC

Truck End Mounted
with Power Unit



STH

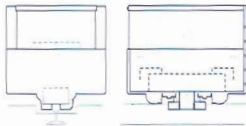
Sill Beam Mounted
with Power Unit



SBH & SBHL*

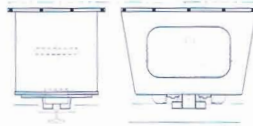
S-SERIES Featuring LATERAL FLOAT

Truck End Mounted
with Vertical Float



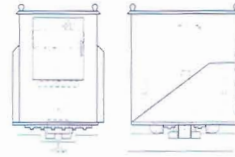
VTC

Sill Beam Mounted
with Vertical Float



VBC

Truck End Mounted
with Vertical Float and
Integral Power Unit



VTH

Sill Beam Mounted
with Vertical Float and
Integral Power Unit



VBH & VBHL*

V-SERIES Featuring VERTICAL AND LATERAL FLOAT

Rail Clamp Size	Static Holding Force Kips/ kN		Dynamic Holding Force Kips/ kN		PRESSURES, psi / bar				POWER HP / kW	APPROX. WEIGHT SBC & STC lb kg		
					Release	Hold-off						
012	12	56	5	22	1030	71	930	64	1.0	0.75	440	200
025	25	111	10	44	1200	83	1100	76	1.0	0.75	580	264
050	50	222	20	88	1200	83	1100	76	1.0	0.75	960	436
075	75	334	30	133	1200	83	1100	76	2.0	1.50	1480	673
100	100	445	40	178	1200	83	1100	76	2.0	1.50	2250	1023
150	150	667	60	267	1200	83	1100	76	3.0	2.24	3600	1636

The above specifications are for estimating purposes only and may be changed without notice; holding values are based on an "as new" serrated shoes bearing on a 250 to 300 BHN rail surface. Performance testing and verification of rail clamps mounted on equipment supplied by others are the responsibility of the customer and/or end-user. More complete details and certified drawings are available upon request. We prefer to quote each specific application to ensure the suitability of a rail clamp selection. Other special purpose storm brake devices, such as rail brakes and wheel clamps, if not already available, may be designed to suit your requirements. Your enquiries will be welcomed and shall receive prompt attention. Please specify required holding capacity, mounting style, duty cycle, special mounting details (if any) rail size, system control requirements and power unit requirements when enquiring or ordering.

*SBHL and VBHL, low profile rail head clamps, are not shown, please enquire for more information.

Johnson industries / elevantja Ltd

Johnson Industries Ltd, 6500 Dennett Place, Delta, BC Canada V4G 1N4
Tel.: 604 940 4555 Fax.: 604 940 4565 email: johnson@jbrakes.com

Eastern Branch Office, 108 Skyway Avenue, Toronto, ON Canada M9W 4Y9
Tel.: 416 213 9991 Fax.: 416 213 9992 email: jbl@brakes.ca

Johnson Elevantja Ltd, Bath Road, Bridgwater, Somerset England TA6 4YQ
Tel.: 44 1278 456 411 Fax.: 44 1278 429 949 email: elevantja@elevantja.com

www.jbrakes.com | www.brakes.ca | www.elevantja.com

DISTRIBUTOR