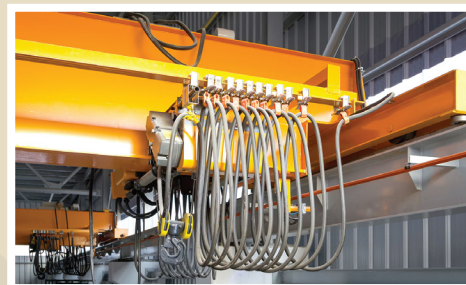




Kor-Pak Crane Inspections, Training, and Modernizations

Providing Expert Inspection and Training Services



Kor-Pak specializes in products and services for Crane & Hoist applications and we believe that safety and efficiency are paramount to keeping your crane running safely and efficiently. By empowering you and your team with the requisite knowledge and resources, you can obtain a better understanding of your crane and make effective, professional, and economical decisions which will invariably boost uptime and productivity. Kor-Pak delivers knowledge assets to your plant to thoroughly inspect your crane according to various industry standards, as well as advise with a complete documented report. Additionally, Kor-Pak has access to a multitude of crane products as well as offering remanufacturing, modernization, and engineering services to insure that you are utilizing the best equipment available as your all-inclusive crane supplier. Kor-Pak can also provide you with Crane Safety Training Courses which are taught by our accomplished and experienced personnel who have taught courses around the world to elite companies. You will undoubtedly find Kor-Pak's Crane Safety Training to be an indispensable element to your plant to implement a proactive approach to crane maintenance which will invariably boost safety and efficiency.





Kor-Pak Corporation: Your Overhead Crane Service Provider and Material Handling Specialist

Overhead Crane Services And Capabilities We Offer:

- **Overhead Crane Inspections for Top Running Cranes** in accordance with OSHA 1910.179, ASME B30.2 and State Regulations. There are two categories of inspections, **Frequent** daily through thirty days and **Periodic** per OSHA and ASME, however due to duty cycles frequency of inspections may be monthly, quarterly, or semi-annually.
 - During an inspection all components of the crane are visually checked for condition as supplied by the manufacturer and the function of all devices, switches, brakes, alarms, structural components, electrical devices and gear train components. To achieve this extensive knowledge of crane regulations and standards as published by NEMA, NEC, AIST, ASME, CMAA and product service manuals supplied by the crane manufacturer.
 - At the completion of the inspection a **full written report will be provided** listing all OSHA, NEC, and safety deficiencies along with recommended repairs followed by a quotation for parts and labor.
- **Overhead Crane for Under Running, Monorails, and packaged hoists** in accordance with ASME B30.11, 16, and 17 accompanied by National Electrical Code, CMAA, and manufacturer's specifications.
 - All safety and crane functions will be inspected and tested for compliance to standards and regulations.
 - Upon completion of the inspection a detailed inspection report shall be published listing all safety and operational deficiencies and recommended repairs.

Specialty Inspections That We Offer :

- **End of Life Inspections:** these are an extensive electrical and mechanical analysis of all components to determine crane life left for service.
 - Motors are tested for FLA, winding resistivity, brush and brush gear conditions, commutator and slip ring conditions supported with digital photographs.
 - All contactors are tested for squareness and parallelism along with contact tip wear, coil condition determined with a VOM and supported by digital photography.



- Gear Cases are dismantled, end play inspected with a digital dial indicator and bearings inspected for overall mechanical condition, gears NDT with Liquid Die Penetrant for sub-surface failure potential again supported by digital photography. Lubricant from the gear case will be sent to a laboratory for analysis of content to determine other mechanical failure potentials.
- The crane structure will have a 100% visual inspection of all welds, connections, and attachment points sounded for security with a hammer.

The End of Life Inspection will be 100% documented listing all deficiencies and safety violations will be furnished along with copies of all photographs taken during the inspection.

- **Critical Component Inspection:** Is usually conducted after a gross overload situation, an acute shock load, or a Two Block incident.
 - Critical Component Inspections require that the structure is 100% inspected, camber measured on both girders both loaded and unloaded to record the difference. 100% visual inspection of all welds, connection points and affected components.
 - Gear Cases get a 100% tear down, visual inspection, and an NDT using the liquid die penetrant or magnetic particle inspection all procedures photographed for reference with the report.
 - In a Two Block situation the drum will be 100% NDT and the procedure photographed for reference.

Technical reference material for all inspections shall include the manufacturer's manuals and specifications, OSHA 1910.179, State Regulations, ASME B30 standards, AIST, National Electrical Code, NEMA ICS 8- 2011 or most recent publication, American Gear Manufacturer's Association Standards, and the American Bearing Manufacture's Association standards.

Crane Upgrades and Modernizations

Kor-Pak specializes in crane upgrades, modernizations, and retrofits. As the name implies MODERNIZING is making the crane perform to modern standards by replacing the following:

- **Brake Systems**
 - Dynamic Stopping and Static Holding Brakes: AC and DC Thruster released brakes, motor mounted brakes, drum and disc brakes.



Kor-Pak Corporation Proudly Presents:

Overhead Crane Inspection Course

Scope:

Kor-Pak's Overhead Crane Inspection Course provides comprehensive coverage of overhead crane structures. Students of this course will become familiarized with various pertinent regulatory standards including OSHA, CMAA and ASME B30. Attendees may participate in an optional written evaluation following the seminar. Those who successfully pass the evaluation will be issued a photo wallet size Crane Inspection Card, valid for 2 years. There is no additional charge for this testing

Who Benefits From This Course?

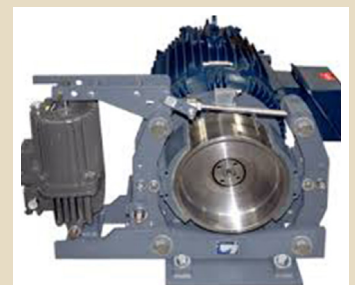
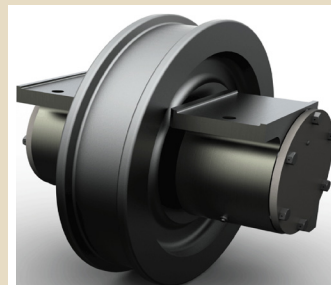
Crane Crew, Electrical & Mechanical Maintenance Professionals, Engineers, Supervisors, and anybody affiliated with EOT cranes and the maintenance & safety of your plant

Primary Goals For This Course:

- Be capable of performing quality routine crane inspections according to relevant OSHA, CMAA, & AMSE regulations
- Receive a professional and working comprehension of OSHA Title 29 regulations
- Obtain an understanding of ANSI/ASME Standard B30
- Documentation and recordkeeping

Course Overview

- Crane types and service classifications
- General inspection requirements
- General crane safety and housekeeping
- Hazards / shutdown conditions
- Runways, wheels, and brakes





- Crane structure and electrical systems
- Drive machinery and hoist equipment

Kor-Pak will provide all requisite coursework books and materials

Let Kor-Pak help you take your cranes to the next level.

For more information, including rates, technical details, or any other related questions.

Please Contact:

Email: sales@kor-pak.com

Phone: (888) 2Kor-Pak

Fax: (847) 680-0283

