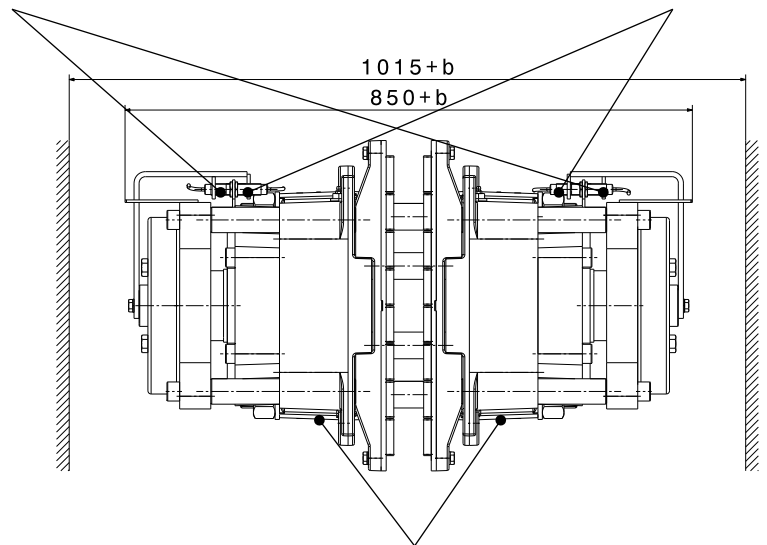
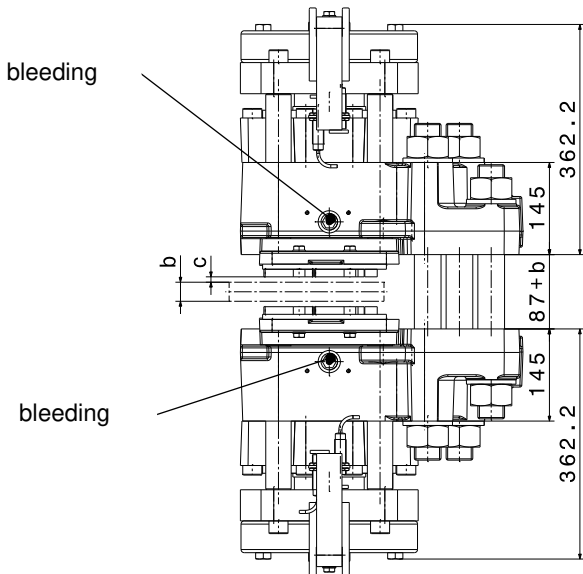


optional limit switch: brake open / closed

optional limit switch: lining wear



hydraulic connection G 1/2"



SHI-Type		251	252	
<b>Clamping Force <math>F_A</math></b>				
$F_A$	with airgap $c = 1 \text{ mm}$	kN	335	440
$F_A$	with airgap $c = 2 \text{ mm}$	kN	302	400
$F_A$	with airgap $c = 3 \text{ mm}$	kN	270	360
<b>Torque Calculation</b>				
$M_{Br}$	braking torque	Nm	$2 \times F_A \times \mu \times (d/2-100)$	
<b>Hydraulic</b>				
$P_L$	release pressure	bar	105	140
$P_{max}$	max. pressure	bar	150	175
$V_{max}$	volumen at $c = 2,0 \text{ mm}$	ltr	0,142	
<b>Brake Discs</b>				
b	disc thickness	mm	$\geq 20$	
d	disc-Ø	mm	$\geq 1200$	
$d_1$	max. hub or drum-Ø	mm	d-490mm	
<b>Dimensions</b>				
L x W x H = 440 x (850+b) x 520 mm				
weight: 610 kg				

<b>Mounting Studs</b>			
n	quantity	6	
	size, grade	M42, 12.9	
$M_A$	fastening torque	Nm	6000 at $\mu = 0,14$
<b>Linings</b>			
	material	sinter	
	friction coefficient*	0,4	

\*average friction coefficient with standard material combination and a circumferential speed up to 15 m/s