

Storm Brakes

Spring-Applied Hydraulic Released Wheel Brakes

KPHWB Series

Application:

Wheel brakes are typically used on passive wheels and “clamp” to the wheel. They effectively prevent the wheel from rolling when exposed to environmental conditions such as strong wind velocities.

Consequently, wheel brakes are widely used for storm braking, which is a highly effective wind-roof solution.

If the brake is applied on high speed shaft of drive wheel, it will be more effective and economical.

Main features:

KPHWB Series

- *Normally-closed design, safe and reliable; Spring-set and hydraulically released*
- *Equipped with limit switch, which can provide signal indication and interlocking protection.*
- *Brake lining is made from non-asbestos friction material with a high friction coefficient and can withstand harsh conditions such as exposure to saltwater and salt mist.*
- *Anti-corrosion design. All fasteners and spindles are made from stainless steel, with excellent anti-corrosion performance.*



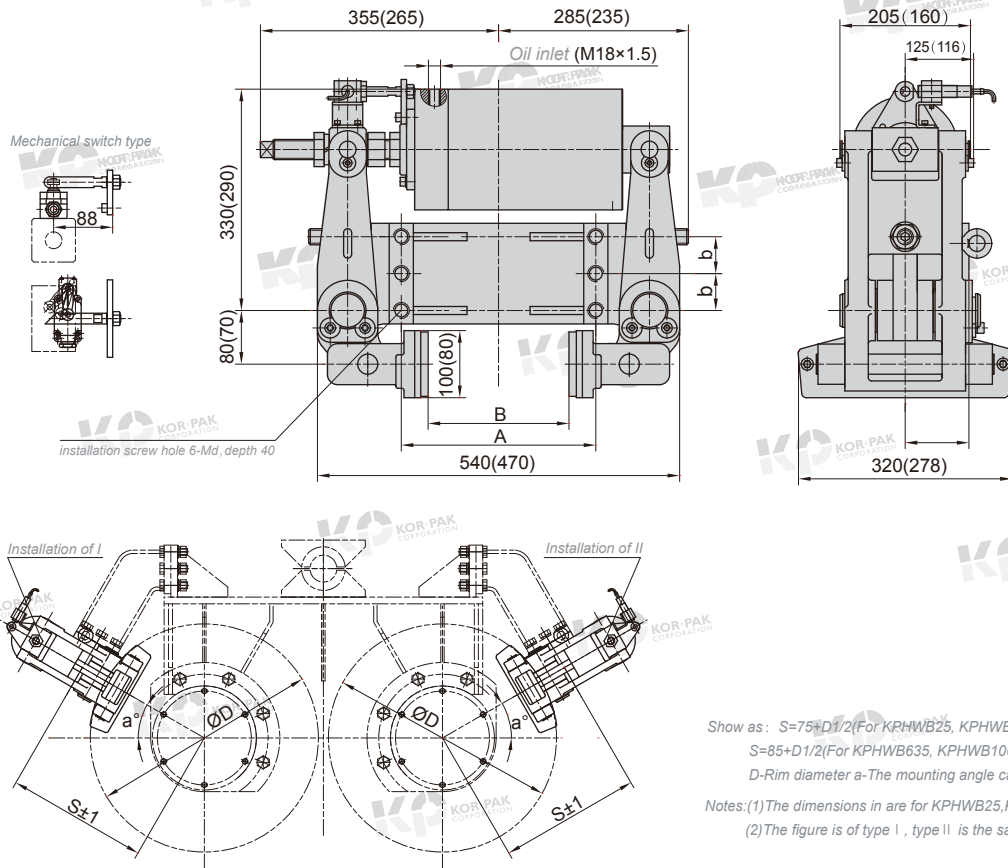
KPHWB Series

Storm Brakes



KPHWB Series Spring-Applied Hydraulic Released Wheel Brakes

08/2013



Show as: $S=75+D/2$ (For KPHWB25, KPHWB40)
 $S=85+D/2$ (For KPHWB635, KPHWB100)
 D - Rim diameter a - The mounting angle can be any value.
 Notes: (1) The dimensions in are for KPHWB25, KPHWB40
 (2) The figure is of type I, type II is the same as type I

Type	Rated clamping force (KN)	Rated static friction force T (KN)	Oil volume (ml)	Oil pressure (MPa)	Dimension (mm)					Applicable wheel pressure range p (T)	Weight (kg)
					B	A	b	h	d		
KPHWB25-□	50	42	70	8	150~200	250	50	85	20	$P \leq 25$	95
KPHWB40-□	73	63								$25 < P \leq 40$	98
KPHWB63-□	114	96	80	12	150~210	290	55	95	24	$40 < P \leq 63$	142
KPHWB100-□	180	150	125							$63 < P \leq 100$	158

Please contact our technical department, when wheel width B isn't within the range specified in above table.

Order Example

KPHWB40-160 KPHWB63-180 KPHWB100-200